

Adobe Photoshop v26.8

Generate Image Effects and Reference Image Examples

In this document, you'll find fun examples showcasing the application of different Image Effects and Reference Images when using the Generate Image command in Photoshop. Each example starts with the same prompt, "Yellow Labrador," and the Content Type set to "Art." By applying different Effects and Reference Images, you'll see just how diverse the results can be. And remember, your results will differ as Generate Image never returns the exact same results twice. Enjoy exploring the possibilities and be sure to try combining multiple effects together!

IMAGE EFFECTS

MOVEMENTS

Art Deco
Art Nouveau
Baroque
Bauhaus
Constructivism
Cubism
Cyberpunk
Fantasy
Fauvism
Film Noire
Glitch Art
Impressionism
Industrial
Maximalism
Minimalism
Modern Art
Modernism
Neo-expressionism
Pointillism
Psychedelic
Science fiction
Steampunk
Surrealism
Syntheism
Synthwave
Vaporwave

THEMES

3D
Anime
Cartoon
Cinematic
Comic book
Concept Art
Cyber Matrix
Digital Art
Flat Design
Geometric
Glassmorphism
Glitch Graphic
Graffiti
Graphic
Hyper Realistic
Interior Design
Line Gradient
Low Poly
Newspaper Collage
Optical Illusion
Pattern Pixel
Pixel Art
Pop Art
Product Photo
Psychedelic background
Psychedelic Wonderland

TECHNIQUES

Scandinavian
Splash Images
Stamp
Trompe l'oei
Vector Look
Wireframe
Acrylic paint
Bold Lines
Chiaroscuro
Color Shift Art
Daguerreotype
Digital Fractal
Doodle Drawing
Double Exposure
Fresco
Geometric Pen
Halftone
Ink
Light Painting
Line Drawing
Linocut
Oil Paint
Paint Splattering
Painting
Palette Knife

Photos Manipulation
Scribble Texture
Sketch
Splattering
Stippling
Watercolor

EFFECTS

Antique Photo
Bioluminescent
Bokeh Effect
Color Explosion
Dark
Faded Image
Fisheye
Gomori photography
Grainy Film
Iridescent
Isometric
Misty
Neon
Otherworldly
Ultraviolet
Underwater

MATERIALS

3D Patterns

Charcoal
Claymation
Fabric
Fur
Layered Paper
Made of Metal
Marble
Origami
Paper Mache
Poka-dot-pattern
Quilloche Patterns
Strange Pattern
Wood Carving
Yarn

CONCEPTS

Beautiful
Bohemian
Chaotic
Dias
Divine
Eclectic
Futuristic
Kitchy
Nostalgic
Simple

STYLE REFERENCE IMAGE

Acrylic & Oil	Digital Illustration	Photo Studio	Geometric
Watercolor	Graphic	Photo Manipulation	Flat
Pencil	Neon	Lighting Effects	
Architectural Sketch	Dramatic Lighting	Texture	
3D	Landscape	Color and Lighting	

COMPOSITION REFERENCE IMAGE

Abstract
Photography
Line Drawing

Note: The definitions/descriptions for the Image Effects on the following pages were created by ChatGPT.

MOVEMENTS

Art Deco

A decorative art and design style from the 1920s–40s characterized by geometric shapes, bold colors, symmetry, and lavish ornamentation, often seen in architecture, fashion, and product design.



Art Nouveau

A late 19th-century style known for its organic forms, flowing lines, and floral motifs. It aimed to unify fine arts and applied arts in architecture, furniture, and illustration.



Baroque

A dramatic and ornate style of art and architecture from 17th-century Europe, characterized by grandeur, intense emotions, rich color, and strong contrasts of light and shadow.



Bauhaus

A German art and design movement (1919–1933) that emphasized simplicity, functionality, and the unity of art, craft, and technology. It shaped modern design and architecture.



Constructivism

An abstract art movement from post-revolutionary Russia (1910s–30s) focusing on geometric forms, industrial materials, and art with social or political purpose.



Cubism

An early 20th-century avant-garde movement pioneered by Picasso and Braque, featuring fragmented, abstracted objects and multiple perspectives within a single image.



Cyberpunk

A science fiction aesthetic blending high-tech and low-life themes, often with neon lights, dystopian settings, cybernetics, and digital decay.



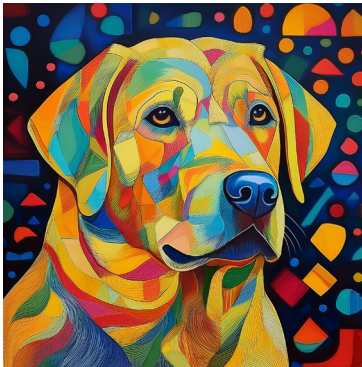
Fantasy

A genre and visual style rooted in imaginative, magical, or mythical worlds. Often features dragons, wizards, medieval settings, and supernatural themes.



Fauvism

An early 20th-century movement led by Henri Matisse, marked by bold, unnatural colors and expressive brushwork, prioritizing emotional resonance over realism.



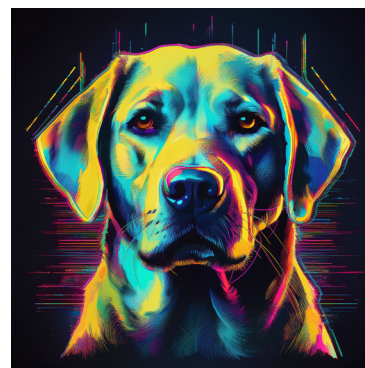
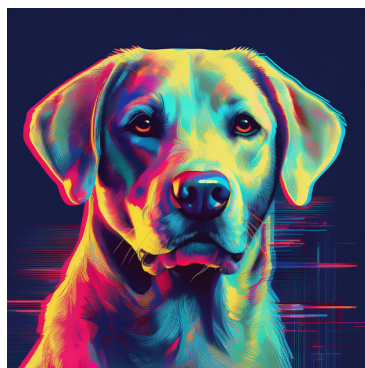
Film Noire

A cinematic style from the 1940s–50s characterized by moody lighting, deep shadows, urban settings, moral ambiguity, and themes of crime, betrayal, and fatalism.



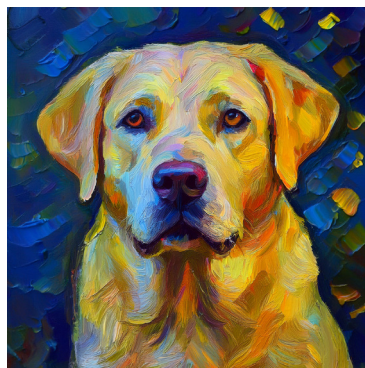
Glitch Art

A digital art style that embraces visual errors or “glitches”—unexpected distortions or corruptions of digital files—as a form of aesthetic expression.



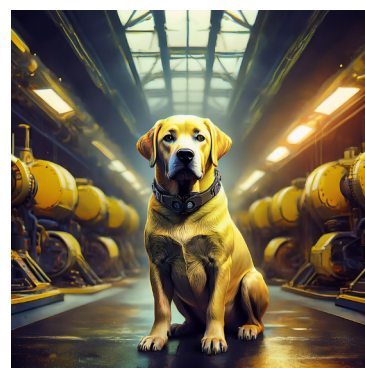
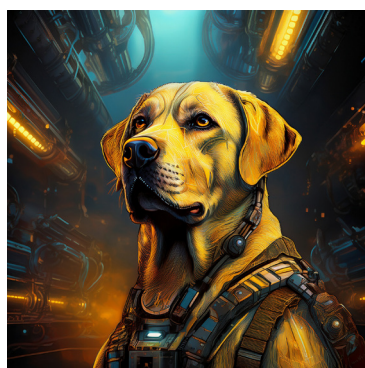
Impressionism

A 19th-century painting style focused on capturing fleeting effects of light and atmosphere using quick, visible brushstrokes and a lighter color palette.



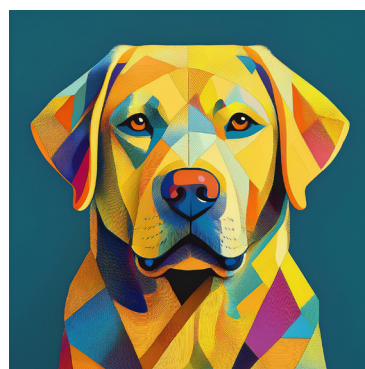
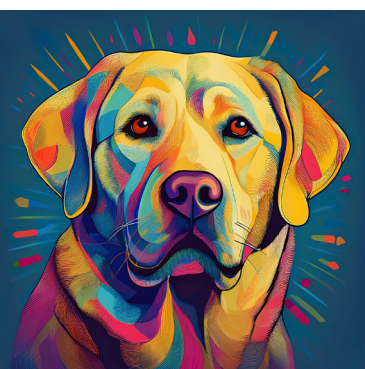
Industrial

A design aesthetic inspired by factories and machinery—featuring exposed materials (metal, brick, wood), raw textures, and functional forms.



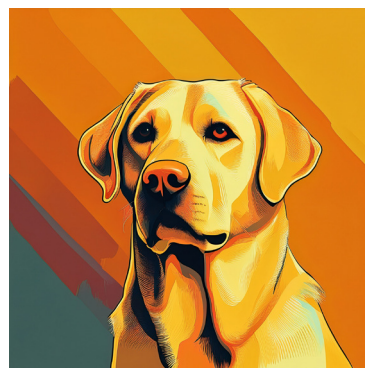
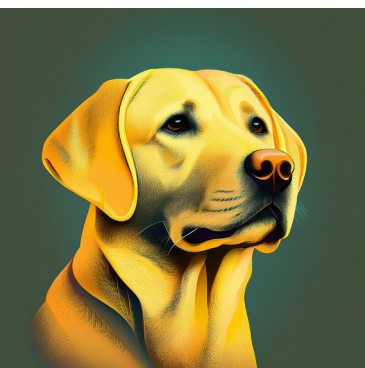
Maximalism

An aesthetic embracing excess, abundance, and layered visual richness. It contrasts with minimalism by celebrating complexity, bold colors, and ornate details.



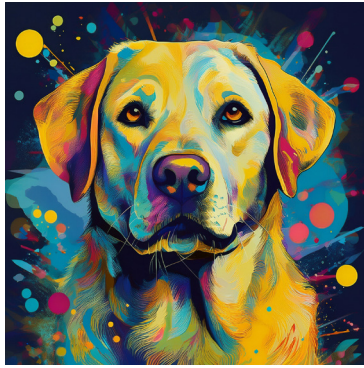
Minimalism

A movement across art, design, and architecture that favors simplicity, clean lines, and limited color palettes. It emphasizes “less is more.”



Modern Art

A broad term for art created roughly between the 1860s–1970s, breaking with tradition and exploring new ideas, abstraction, and experimentation in form and subject.



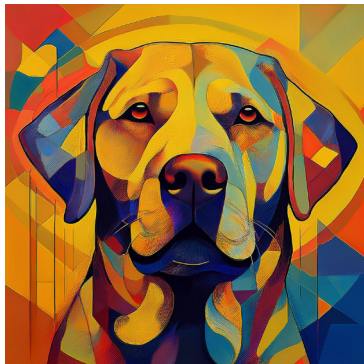
Modernism

A cultural movement rooted in the late 19th–20th centuries, emphasizing innovation, rationality, and a break from historical styles in favor of progress and abstraction.



Neo-expressionism

A late-20th-century revival of expressive painting, often raw, emotional, and figurative, reacting against conceptual and minimalist art.



Pointillism

A painting technique developed by Georges Seurat, using tiny dots of color applied in patterns to form an image, based on optical color mixing.



Psychedelic

An art style linked to the 1960s counterculture, characterized by bright, saturated colors, swirling patterns, surreal imagery, and visual distortions inspired by altered states.



Science Fiction

A genre centered around speculative, futuristic, or extraterrestrial themes. Visually, it often features advanced tech, space travel, and imagined scientific possibilities.



Steampunk

A retro-futuristic style combining Victorian-era aesthetics with speculative steam-powered technology—often involving gears, goggles, and brass machinery.



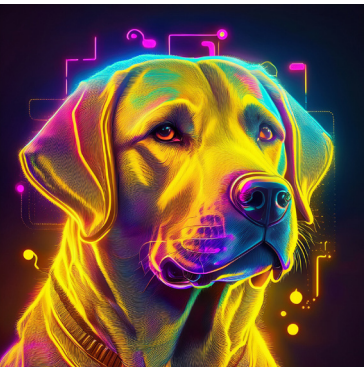
Surrealism

A 20th-century movement exploring dreams, the unconscious, and irrational juxtapositions, often with bizarre, fantastical imagery.



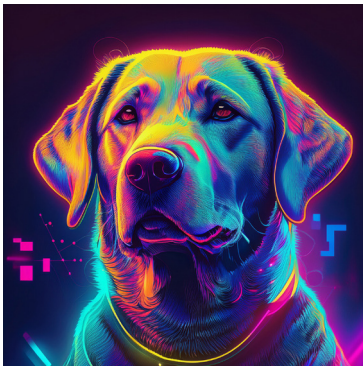
Syntheism

A philosophical and artistic idea proposing a secular, man-made spirituality or collective creativity, sometimes linked to post-religious or techno-utopian themes in art.



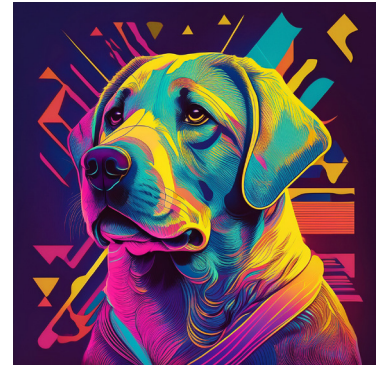
Synthwave

A music and visual style inspired by 1980s culture—featuring neon colors, retro-futuristic grids, chrome text, and nostalgic digital aesthetics.



Vaporwave

An internet-born aesthetic and music style marked by glitchy visuals, nostalgic consumer culture, retro tech, lo-fi music, and surreal, ironic reinterpretations of 80s/90s media.



THEMES

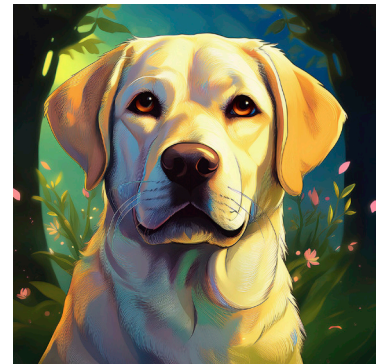
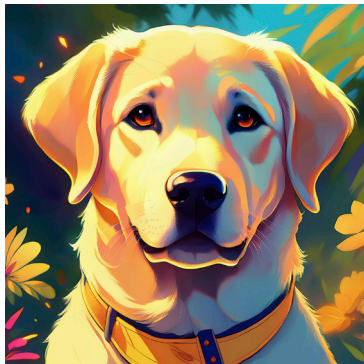
3D

Art or design that appears three-dimensional, often created using modeling software to simulate depth, lighting, and perspective.



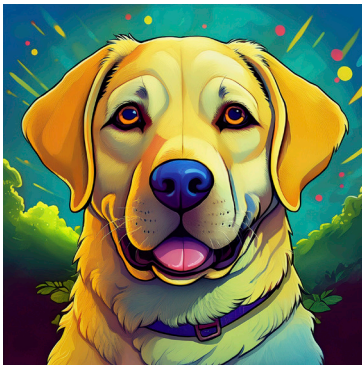
Anime

A Japanese animation style characterized by vibrant characters, dramatic expressions, and stylized storytelling. Often features exaggerated eyes and emotional themes.



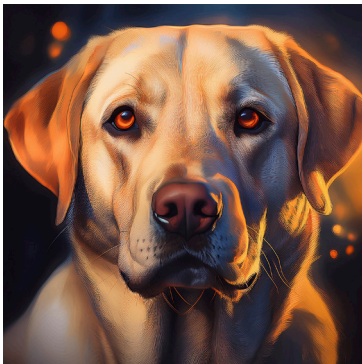
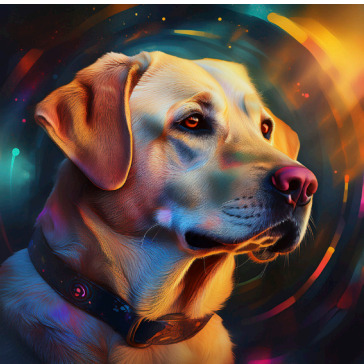
Cartoon

A simplified, exaggerated visual style used in animation, comics, or illustrations—often humorous or whimsical in tone.



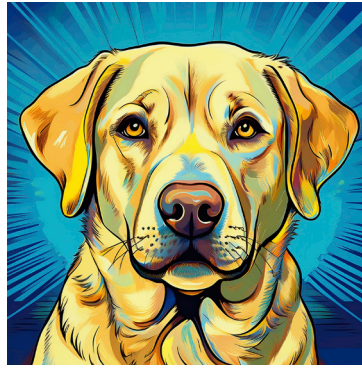
Cinematic

A style inspired by film, emphasizing dramatic lighting, wide aspect ratios, and storytelling through visual composition and atmosphere.



Comic book

A bold, high-contrast style often featuring ink outlines, halftone shading, dramatic action, and speech bubbles—used in graphic novels and superhero media.



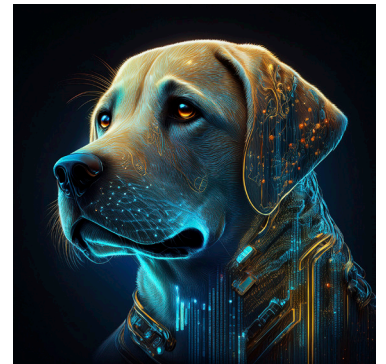
Concept Art

Pre-visualization artwork used to explore ideas for characters, environments, or scenes in games, films, and animation before production begins.



Cyber Matrix

A futuristic, tech-heavy aesthetic inspired by *The Matrix*—featuring dark tones, green code, neon lights, and digital dystopia.



Digital Art

Artwork created primarily using digital tools like tablets, software, or AI—spanning many styles including painting, illustration, 3D, and generative art.



Flat Design

A minimalist visual style that uses simple shapes, bold colors, and no depth or texture—commonly used in icons, interfaces, and infographics.



Geometric

Designs that rely on clean, mathematical shapes like circles, triangles, and polygons—often used in abstract compositions or modern design.



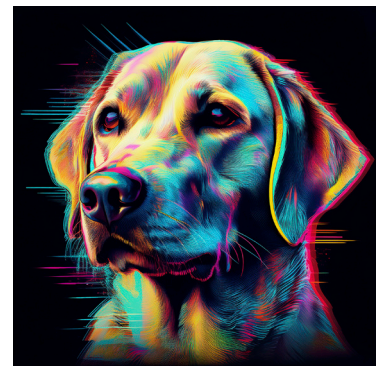
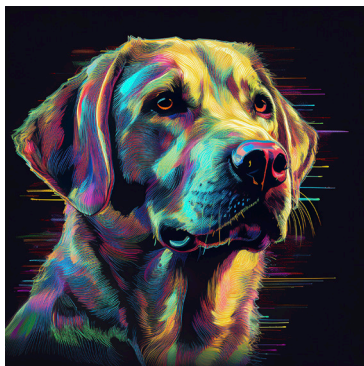
Glassmorphism

A UI and graphic design trend with frosted-glass effects—translucent elements layered over colorful or blurred backgrounds.



Glitch Graphic

A visual style that mimics digital corruption or error—featuring pixelation, color shifts, and distorted elements for a techy or rebellious aesthetic.



Graffiti

Street-art inspired visuals, often involving spray paint textures, bold lettering, and expressive, urban themes.



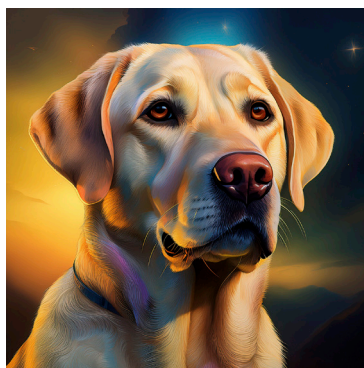
Graphic

A general term for bold, visually striking designs that emphasize shapes, contrast, typography, or icons—often vector-based or stylized.



Hyper Realistic

Extremely detailed art that closely mimics real life—often created through digital painting or advanced 3D rendering.



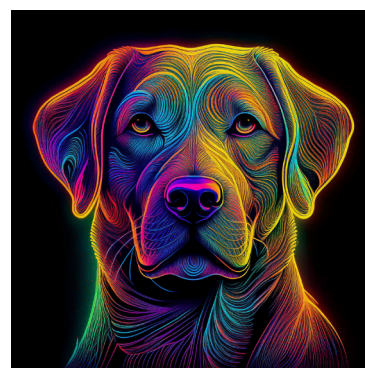
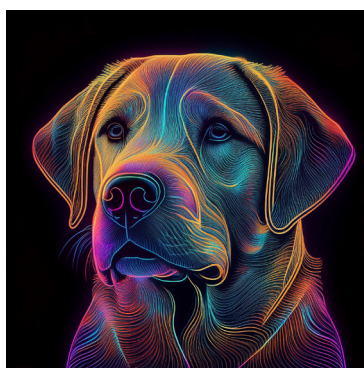
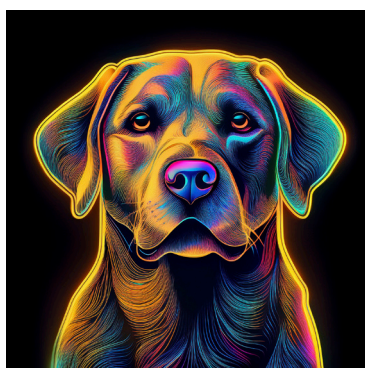
Interior Design

Visuals focused on architectural or room design—emphasizing layout, furniture, color palettes, and mood.



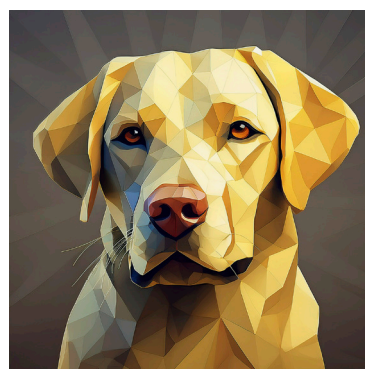
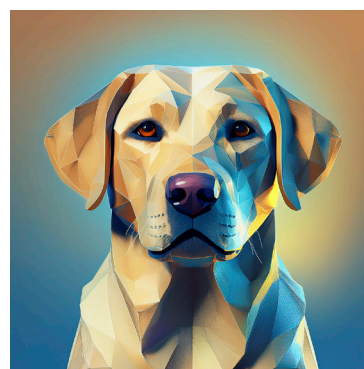
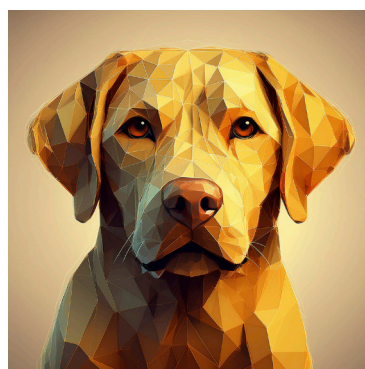
Line Gradient

A design style using smooth, linear color transitions—popular in modern UI, branding, and illustrations for dynamic, clean effects.



Low Poly

A 3D style made with a minimal number of polygons—creating a blocky, faceted look often used for stylized visuals or game art.



Newspaper Collage

A mixed-media aesthetic combining cutouts of text, headlines, and photos—used to create layered, often chaotic compositions.



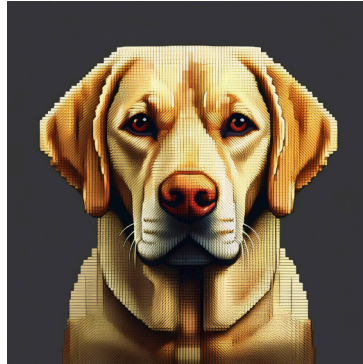
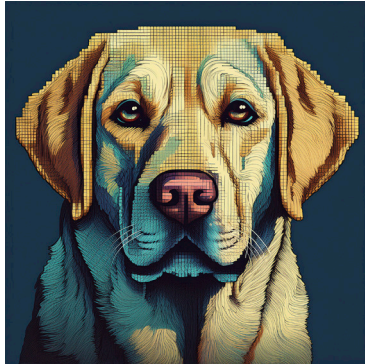
Optical Illusion

Designs that deceive the eye—often using geometry, perspective, or contrast to create visual trickery or depth.



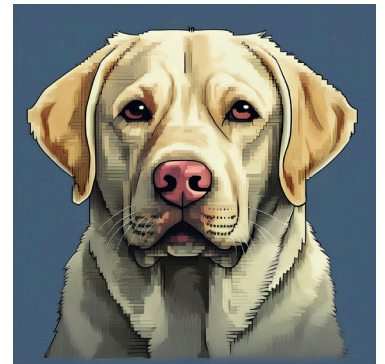
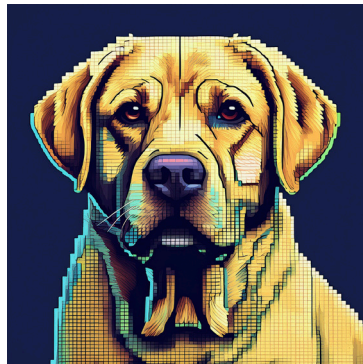
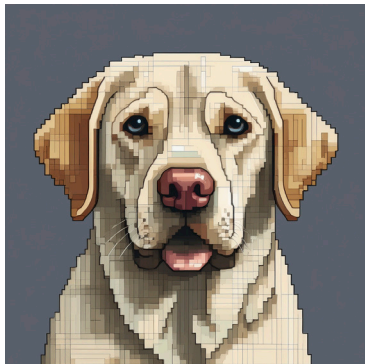
Pattern Pixel

Designs that use tiny, repeatable pixel-based patterns—often retro in feel, similar to textiles or sprite art.



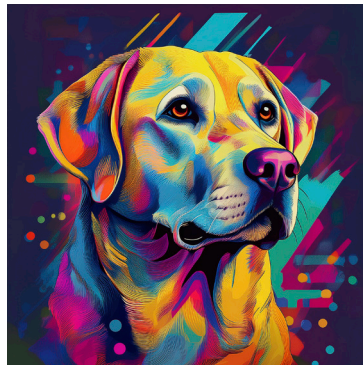
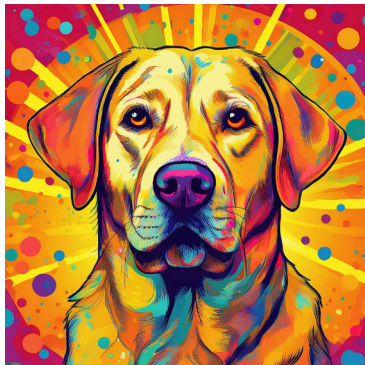
Pixel Art

A digital art style that mimics the blocky look of early video games—built from small, square pixels with limited color palettes.



Pop Art

A mid-20th-century style using imagery from popular culture—featuring bright colors, comic techniques, and bold visuals (e.g., Warhol, Lichtenstein).



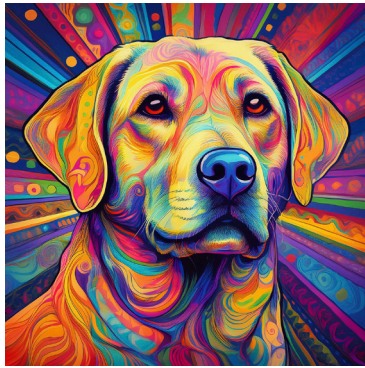
Product Photo

A clean, often minimal visual style focused on showcasing products—emphasizes lighting, background control, and visual clarity.



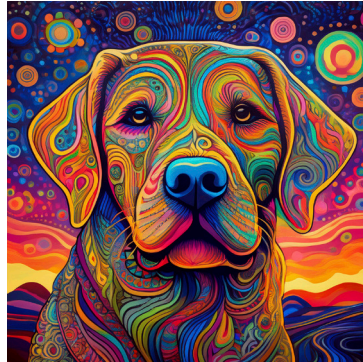
Psychedelic Back- ground

Colorful, swirling, and surreal pat-
terns often inspired by the 1960s
counterculture—used as visual
texture or mood-setting.



Psychedelic Wonder- land

An immersive, dreamlike theme filled
with surreal creatures, vibrant colors,
and fantasy landscapes—often
whimsical or mind-bending.



Scandinavian

A minimalist design style empha-
sizing natural materials, clean
lines, muted colors, and functional
elegance.



Splash Images

Dynamic compositions that use
bursts of paint, color, or liquid to
create high-energy visuals—often
layered with photos or text.



Stamp

A style that mimics ink or rubber
stamps—using textured edges,
solid fill shapes, or postal/military
design cues.



Trompe l'oeil

A painting or design technique that “tricks the eye” into seeing three-dimensional realism on a flat surface—used for illusionistic effects.



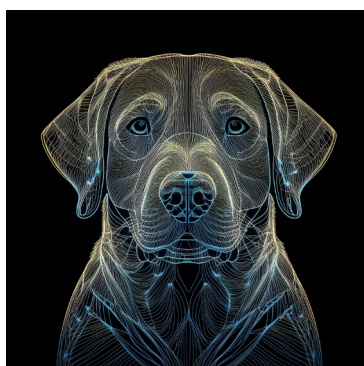
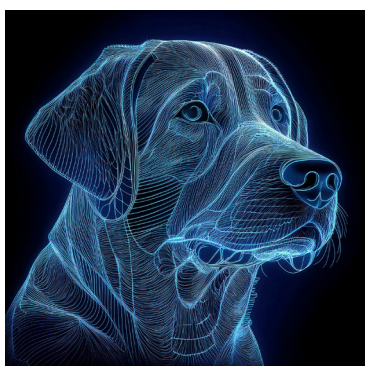
Vector Look

Art created with vector graphics—clean, scalable shapes and lines often with flat colors, used in icons, infographics, and branding.



Wireframe

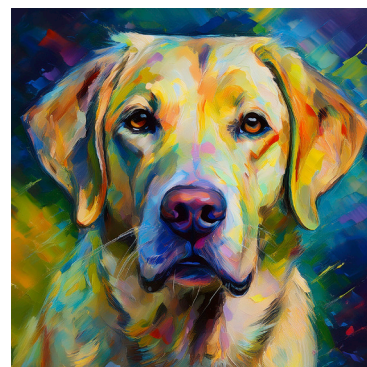
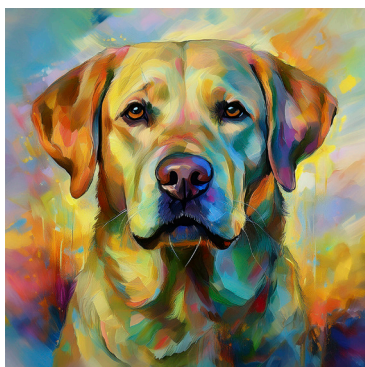
A visual representation of a 3D object or web layout using only lines and points—often used in modeling, prototyping, or tech visuals.



TECHNIQUES

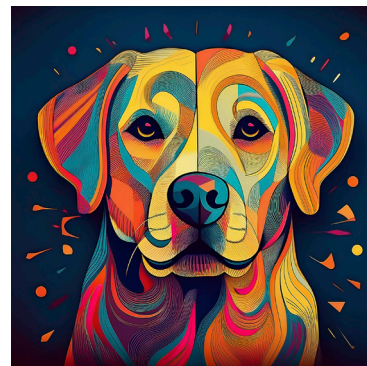
Acrylic Paint

A fast-drying paint made of pigment suspended in acrylic polymer. It can mimic both watercolor and oil techniques and is known for its vibrant color and versatility.



Bold Lines

Thick, strong outlines used to define forms clearly and dramatically—commonly found in graphic art, cartoons, and illustrative styles.



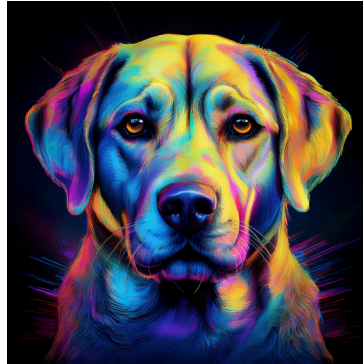
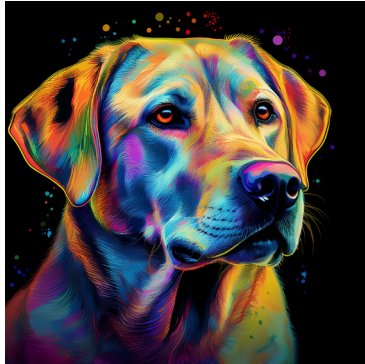
Chiaroscuro

A technique that uses strong contrasts between light and dark to give the illusion of depth and volume—used famously by Caravaggio and Rembrandt.



Color Shift Art

Artwork that changes appearance based on lighting or angle—often using iridescent or holographic colors to shift hues dynamically.



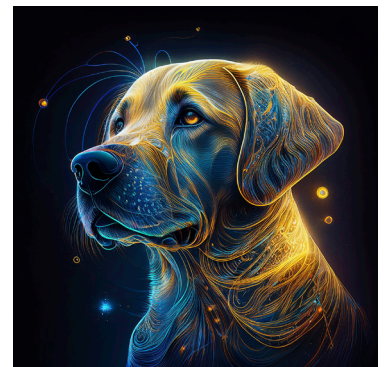
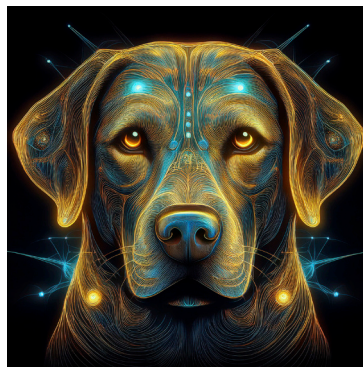
Daguerreotype

An early photographic process from the 1830s, using a polished silver surface to create highly detailed, monochrome images.



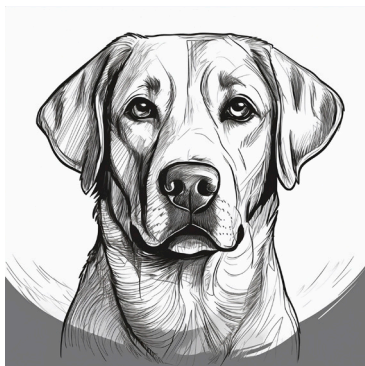
Digital Fractal

Artwork generated using mathematical formulas to create infinite, self-repeating patterns—often complex, abstract, and colorful.



Doodle Drawing

Casual, spontaneous line art that often features repetitive patterns, whimsical shapes, and freeform expression.



Double Exposure

A photographic (or digital) technique where two images are combined into one—often creating surreal, dreamlike compositions.



Fresco

A mural painting method where pigment is applied to freshly laid wet plaster, allowing the paint to become part of the wall surface.



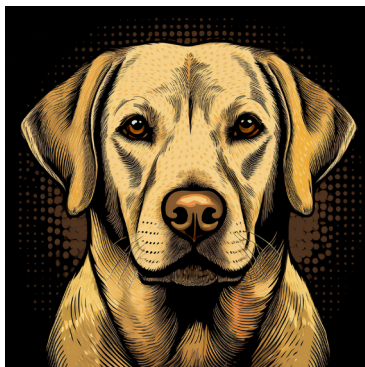
Geometric Pen

Drawing technique that uses clean, precise pen lines to create geometric shapes, often in abstract or architectural compositions.



Halftone

A print technique that uses dots of varying sizes and spacing to simulate shades of gray or color—common in comic books and retro prints.



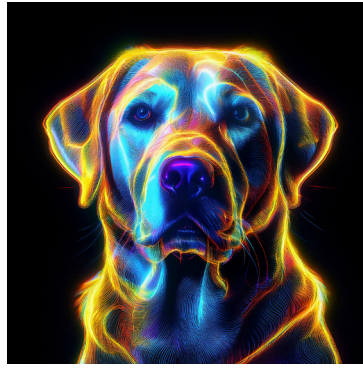
Ink

A fluid medium used for drawing or calligraphy—can be applied with pens, brushes, or dip tools for detailed or expressive line work.



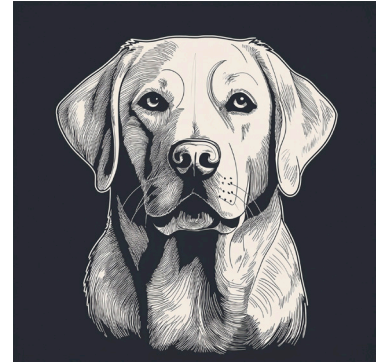
Light Painting

A photographic technique using long exposure to capture trails of light drawn or moved through a scene—often abstract and dynamic.



Line Drawing

Artwork created primarily with lines—minimal or detailed, often lacking shading or color, used for structure and clarity.



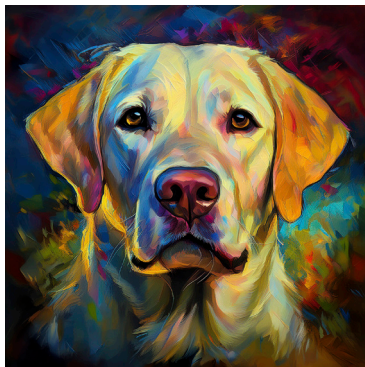
Linocut

A printmaking technique where designs are carved into linoleum, inked, and pressed onto paper—similar to woodcut but softer in texture.



Oil Paint

A slow-drying paint made with pigments suspended in oil (often linseed). Known for rich colors, smooth blending, and luminous depth.



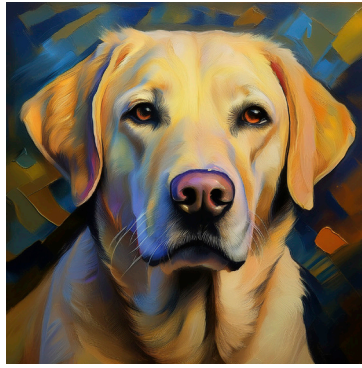
Paint Splattering

A dynamic technique where paint is thrown, flicked, or dripped onto a surface for expressive, chaotic effects (e.g., Jackson Pollock).



Painting

The act of applying pigment to a surface—including a wide range of mediums (oil, acrylic, watercolor) and techniques (realism, abstract, etc.).



Palette Knife

A flat, flexible tool used to apply thick paint to a surface—often creating textured, expressive strokes in oil or acrylic paintings.



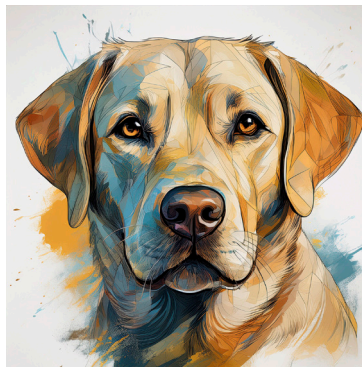
Photo Manipulation

Digital editing of photographs to alter reality—ranging from subtle retouching to surreal or fantastical compositing.



Scribble Texture

A drawing method that builds form or texture with random, overlapping scribbled lines—used for shading or expressive design.



Sketch

A rough or unfinished drawing used to explore ideas or plan compositions—often done quickly and loosely in pencil or ink.



Splattering

Similar to paint splattering—flicking pigment onto a surface to create texture, randomness, or energy in a composition.



Stippling

A shading technique using thousands of small dots—closer dots create darker areas, while spaced dots create lighter ones.



Watercolor

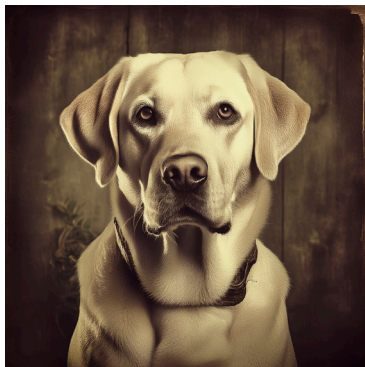
A transparent painting medium where pigment is mixed with water—known for its soft, fluid appearance and layering potential.



EFFECTS

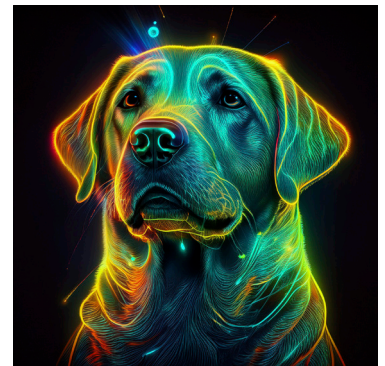
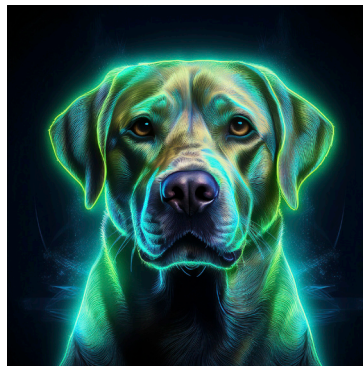
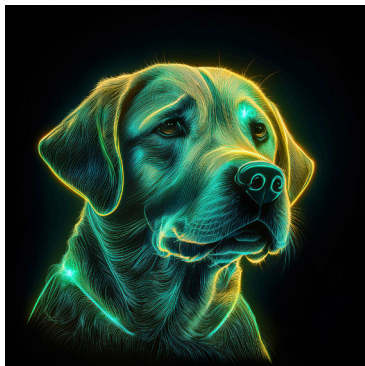
Antique Photo

An effect that mimics the appearance of old photographs—typically featuring sepia or black-and-white tones, faded contrast, vignetting, scratches, or paper texture to create a nostalgic, vintage look.



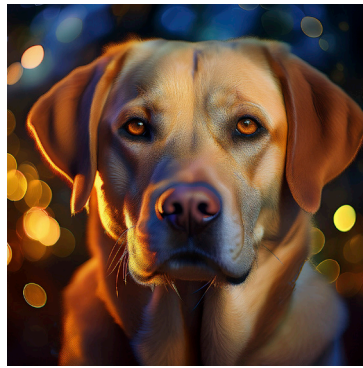
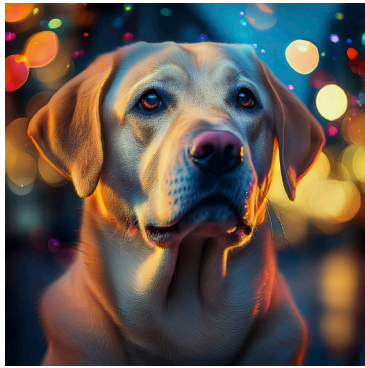
Bioluminescent

A glowing visual effect inspired by natural organisms that emit light (e.g., jellyfish, fungi, fireflies). Often rendered in deep blues, teals, or purples with luminous highlights to evoke a magical or underwater atmosphere.



Bokeh Effect

A shallow depth-of-field photography technique where out-of-focus light sources in the background form soft, circular or hexagonal light shapes. Used to emphasize a sharp subject and create a dreamy or romantic mood.



Color Explosion

An energetic effect featuring bursts or splashes of highly saturated, often contrasting colors. Common in abstract compositions or action shots to convey movement, energy, and chaos.



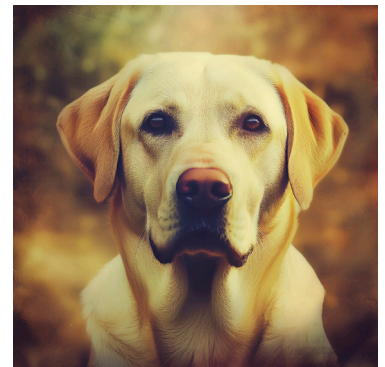
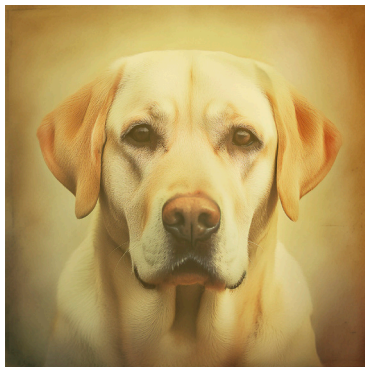
Dark

A moody, low-exposure aesthetic with heavy shadows, deep tones, and minimal highlights. Used to create drama, mystery, intensity, or a cinematic atmosphere.



Faded Image

An effect where the image appears desaturated or washed out, with lowered contrast. Often evokes nostalgia, softness, or a vintage/retro feeling.



Fisheye

A visual distortion effect created by ultra-wide-angle lenses that bend the image into a convex, bubble-like appearance. Straight lines near the edge appear curved, making scenes look spherical or surreal.

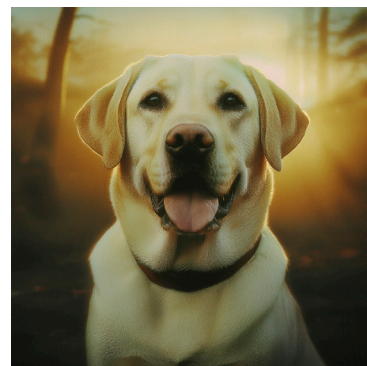


Gomori photography



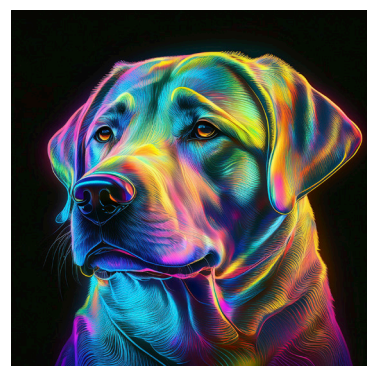
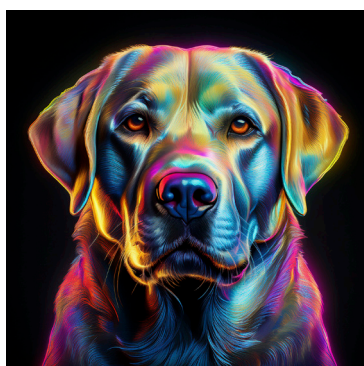
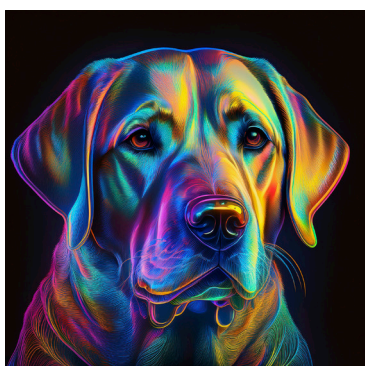
Grainy Film

A texture effect that simulates analog film grain—small, visible particles that add a rough, tactile, and cinematic quality to an image. Often used to add mood, realism, or retro appeal.



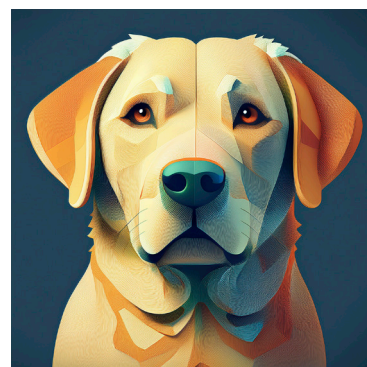
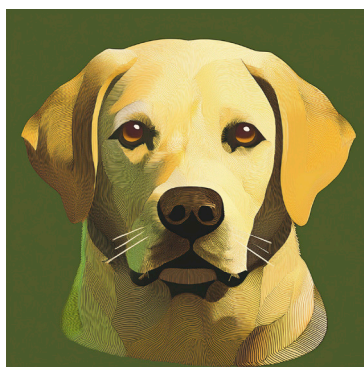
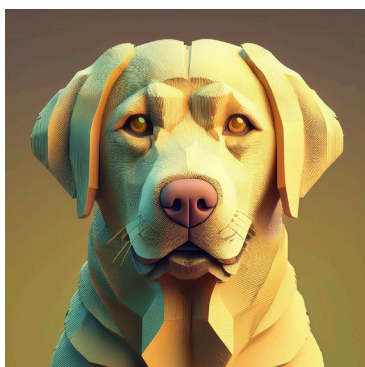
Iridescent

A shimmering, color-shifting effect where surfaces appear to change hue depending on angle and light—mimicking bubbles, oil slicks, or butterfly wings. Creates a futuristic, dreamy, or magical visual.



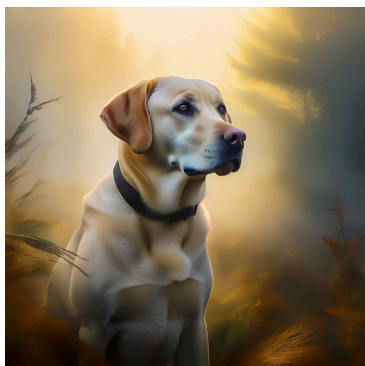
Isometric

A graphical effect where 3D objects are presented without perspective distortion—common in diagrams and game design. Lines are parallel and angles consistent, resulting in clean, structured compositions.



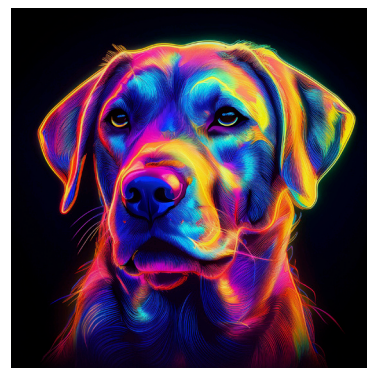
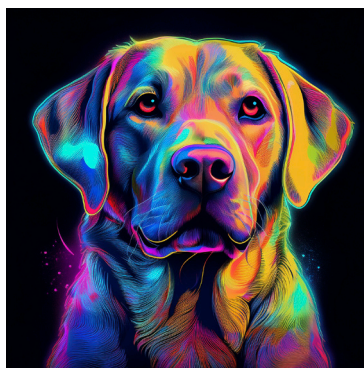
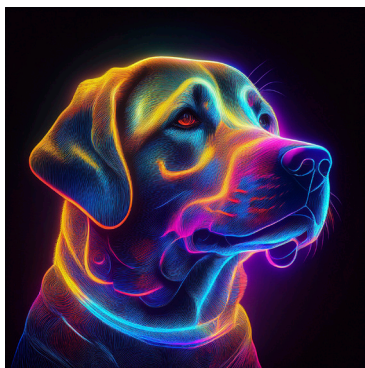
Misty

A soft-focus effect that mimics the presence of fog or mist. Reduces contrast and sharpness to produce a tranquil, ethereal, or mysterious atmosphere.



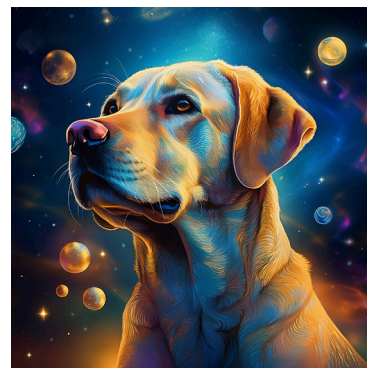
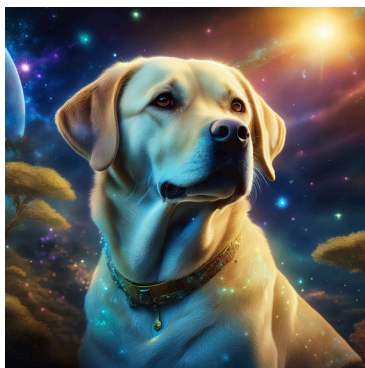
Neon

A glowing, electrified look inspired by neon signage—features bold, saturated colors (often pink, blue, green) with glowing edges on dark backgrounds. Popular in cyber-punk, retro-futuristic, and nightlife aesthetics.



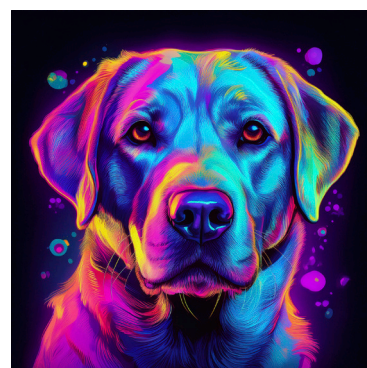
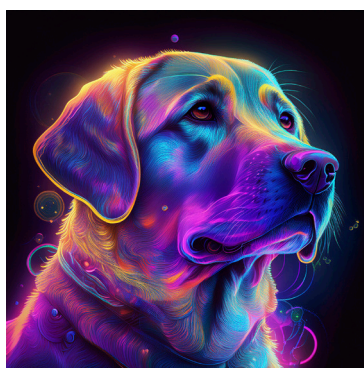
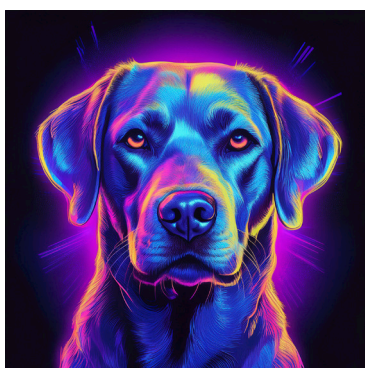
Otherworldly

A surreal, fantastical visual effect that feels alien or dreamlike. May include unnatural landscapes, exaggerated colors, or floating elements that defy physical laws—used to evoke wonder or the supernatural.



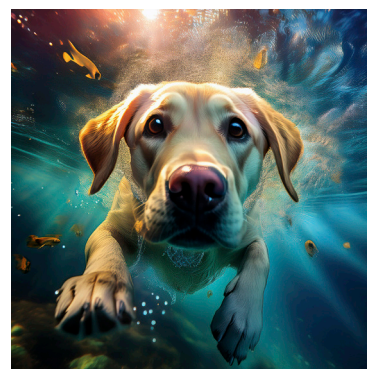
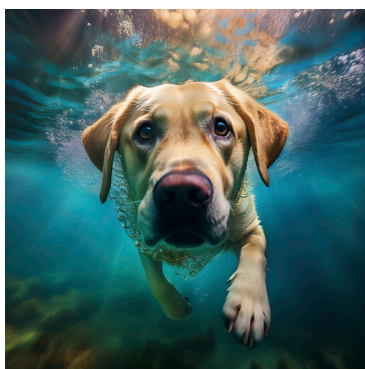
Ultraviolet

An effect that simulates the look of blacklight or UV fluorescence—dark scenes with glowing purples, blues, and fluorescent accents. Often used for high-contrast, psychedelic, or forensic visuals.



Underwater

A visual effect that mimics submersion in water—characterized by blue/green color casts, soft focus, refracted light patterns, and floating particles. Evokes calm, immersion, or aquatic environments.



MATERIALS

3D Patterns

Visual designs that simulate three-dimensional depth—often including shadows, highlights, and perspective to give the illusion of raised, embossed, or recessed patterns on a surface.



Charcoal

A rough, sketch-like texture or effect that mimics drawings made with charcoal sticks—featuring bold, grainy strokes, smudging, and a monochromatic (typically black or gray) palette.



Claymation

An aesthetic that resembles stop-motion animation made with clay figures—featuring soft, malleable textures and handcrafted imperfections.



Fabric

An effect or texture that mimics woven, knitted, or textile surfaces—like cotton, denim, silk, or burlap. Often used to give designs a tactile or cozy feel.



Fur

A soft, fine-textured effect resembling animal fur—characterized by short, layered, directional strands.



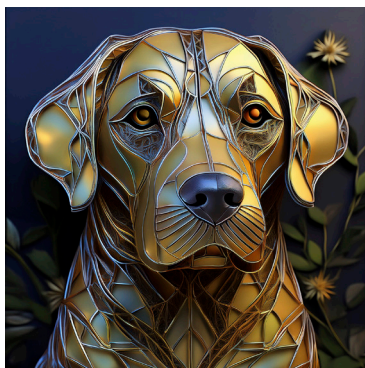
Layered Paper

An effect that simulates cut or stacked sheets of paper arranged in layers to create depth.



Made of Metal

A visual treatment that gives an object a metallic look—featuring shine, reflections, brushed textures, or rust. Often used to evoke strength, industrial design, or sci-fi aesthetics.



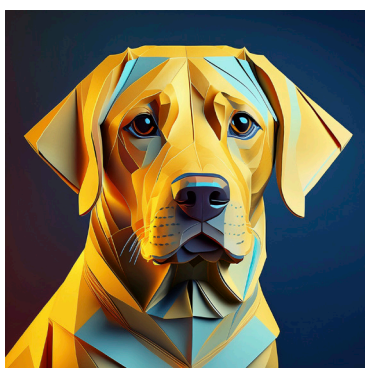
Marble

A stone-like texture with swirls or veins of contrasting color. Often associated with luxury or classical design, the marble effect adds elegance, solidity, and a natural polish to surfaces.



Origami

A folded-paper aesthetic that simulates the look of complex, angular shapes made from a single sheet—used to create stylized animals, geometric forms, or abstract shapes.



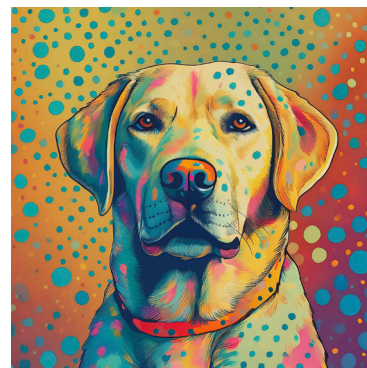
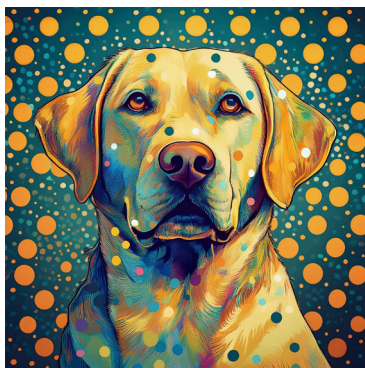
Paper Mâché

A texture mimicking hand-crafted objects made from paper pulp or strips—typically rough, uneven, and layered. It suggests a tactile, sculptural, and homemade quality.



Polka-dot Pattern

A design featuring evenly spaced, repetitive circular dots—often playful or retro in feel, used in fashion, graphic design, and decorative art.



Guilloché Patterns

Intricate, repetitive engraved or drawn patterns, often made with spirals or interwoven lines. Common in banknotes, fine jewelry, and luxury watch design for a refined, ornamental appearance.



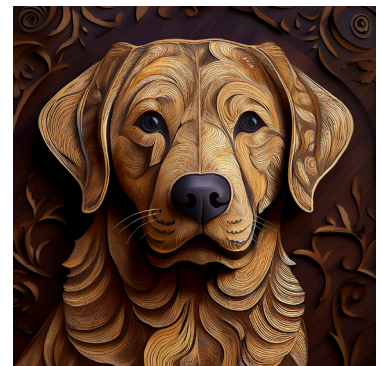
Strange Pattern

A deliberately irregular or surreal design that defies conventional symmetry, repetition, or structure—used to create an uncanny, unexpected, or abstract visual effect.



Wood Carving

A texture or visual effect resembling carved wood—featuring grooves, grain, and relief surfaces. Often used in folk art or digital simulations of engraved surfaces.



Yarn

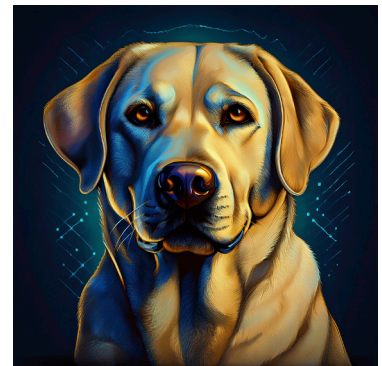
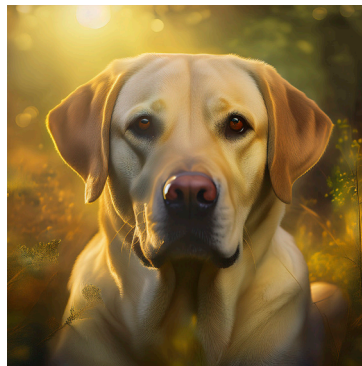
A texture made of twisted fiber strands, often thick and cozy—used in visual design to evoke warmth, craft, or handmade qualities. Common in textile illustration or soft material renderings.



CONCEPTS

Beautiful

An image aesthetic that emphasizes visual harmony, pleasing composition, and emotional resonance—often featuring balanced colors, smooth textures, and subjects that evoke admiration, serenity, or elegance.



Bohemian

A style that blends artistic freedom, eclectic patterns, natural textures, and vintage elements. Often earthy and layered, Bohemian imagery uses warm tones, soft light, and handcrafted or folk-inspired motifs.



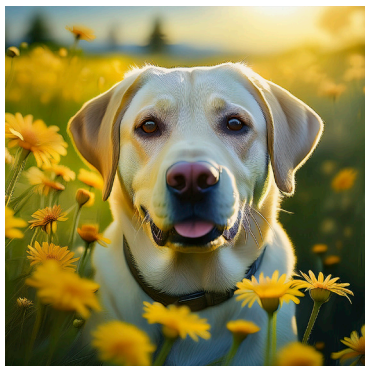
Chaotic

An intense, unstructured visual style where elements feel scattered, disordered, or overwhelming. It often includes clashing colors, dense layering, or dynamic movement to evoke energy, confusion, or unrest.



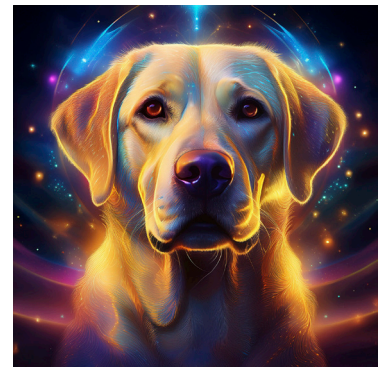
Dias

I had never heard of this concept so I'm guessing that it's Dias (Spanish for "days") – potentially poetic, nostalgic, or temporal visuals.



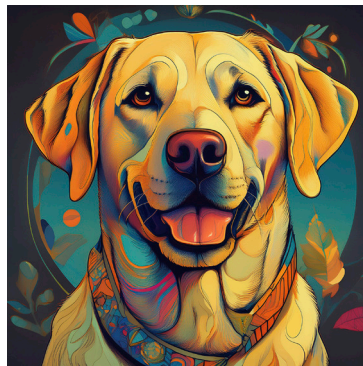
Divine

A visual style that evokes spirituality, holiness, or transcendence—often using radiant light, halos, soft glow effects, and symmetrical or elevated compositions. Colors like gold, white, and blue are common.



Eclectic

A mix-and-match aesthetic combining multiple styles, eras, or influences in one image. It embraces visual contrast, layered textures, and bold juxtapositions to express creativity and personality.



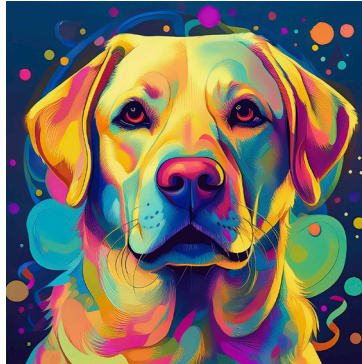
Futuristic

A style inspired by imagined futures—often featuring sleek surfaces, neon glows, metallic textures, minimal interfaces, or advanced technology. Common in sci-fi, cyberpunk, and AI-generated imagery.



Kitschy

A deliberately gaudy, overly sentimental, or tacky visual style—often using exaggerated colors, retro objects, or campy motifs. Kitschy imagery can be playful or ironic.



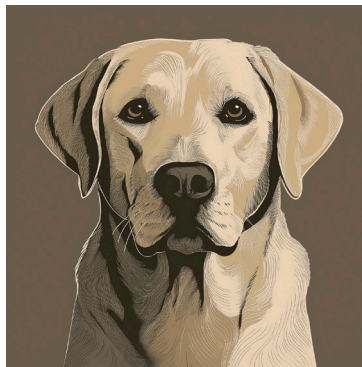
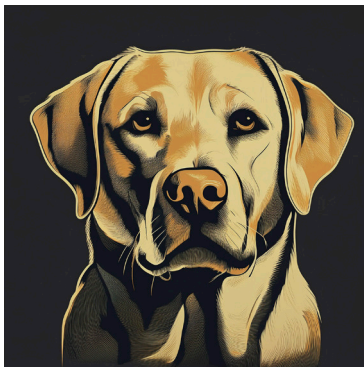
Nostalgic

An effect that evokes memory or longing for the past—commonly using vintage color palettes, film grain, soft focus, or objects from a specific era. It conveys emotion, warmth, or melancholy.



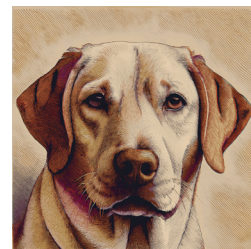
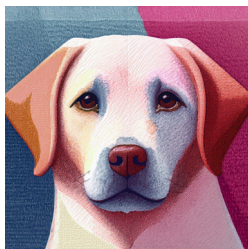
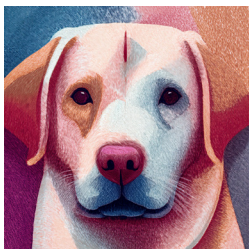
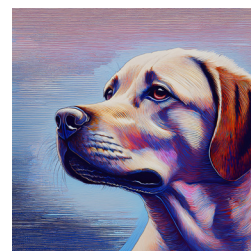
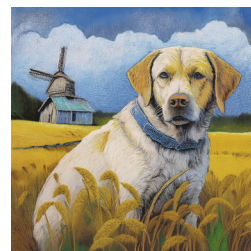
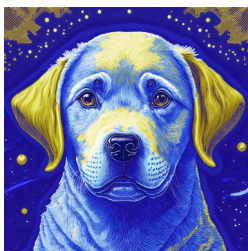
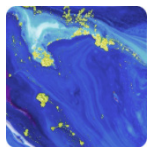
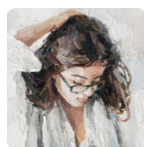
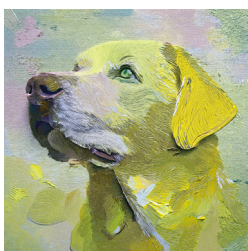
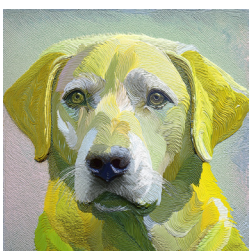
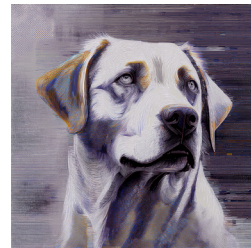
Simple

A clean, minimal aesthetic focused on clarity and restraint—using limited color palettes, minimal detail, and ample negative space. It emphasizes form, composition, and essential elements without distraction.



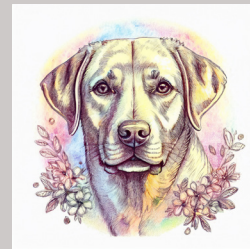
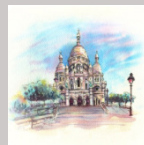
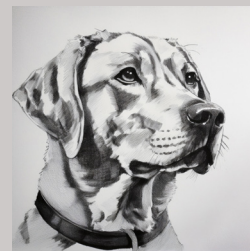
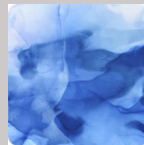
Using a Style Reference image — Below are examples using the gallery of Style References images that ship with Photoshop. The first image (which is smaller) is the Style Reference image. The two larger examples to the right of the Style Reference image are of the results of entering “Yellow Labrador” as the prompt, setting the Content Type to “Art” and selecting the Style Reference image. Your results will differ as the Generate Image command in Photoshop never returns the exact same results twice. *Note: The order in which the Style Reference images appear in the Generate Image dialog changes over time so I have grouped them by the same themes and put them in the same order as they appear on adobe.firefly.com.*

ACRYLICS & OILS



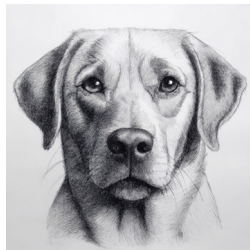


WATERCOLOR





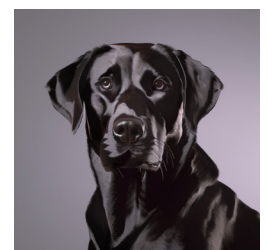
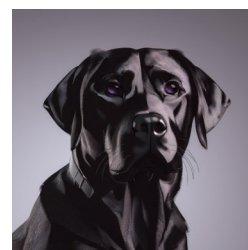
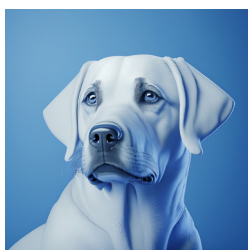
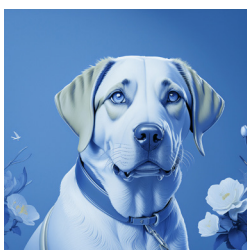
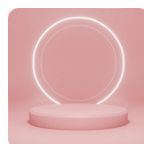
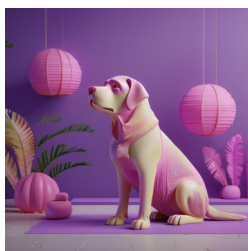
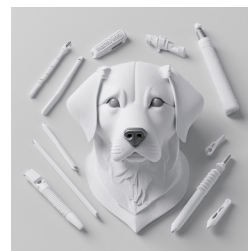
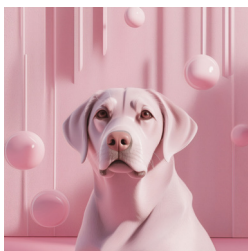
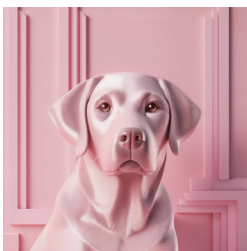
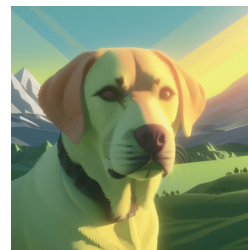
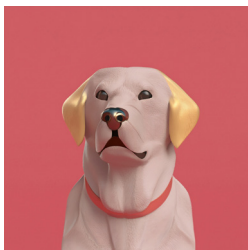
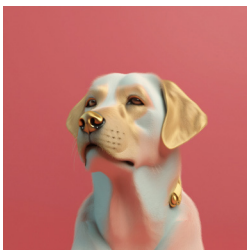
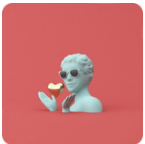
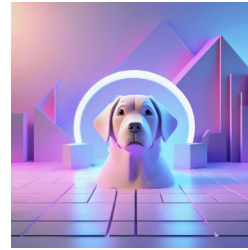
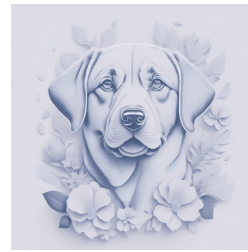
PENCIL

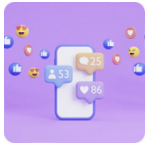
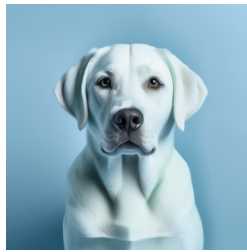
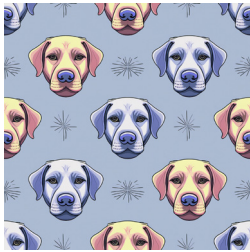
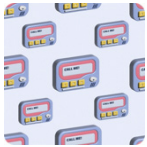


ARCHITECTURAL SKETCH

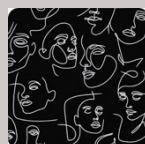
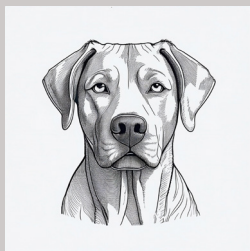
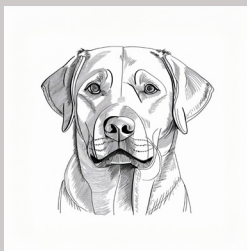
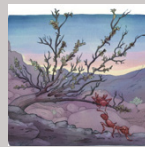
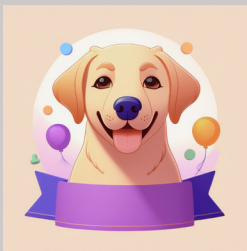


3D

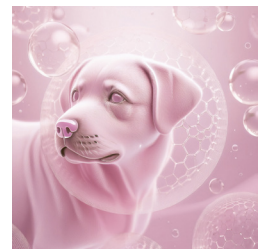
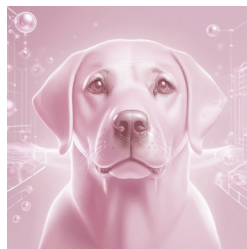
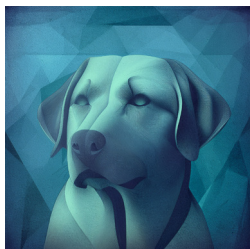
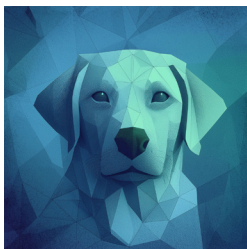
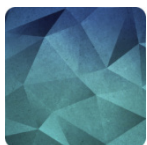


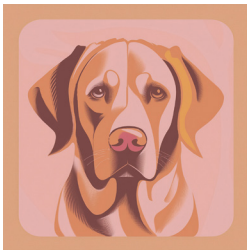
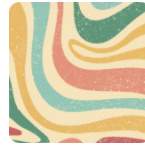
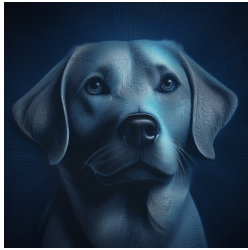
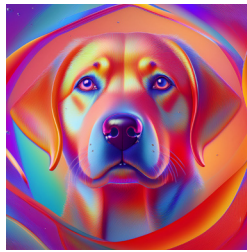
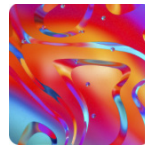
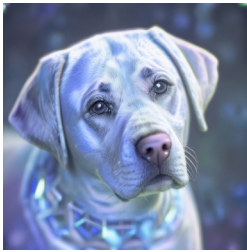


DIGITAL
ILLUSTRATION

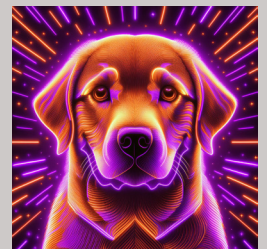
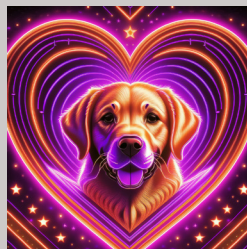
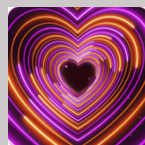
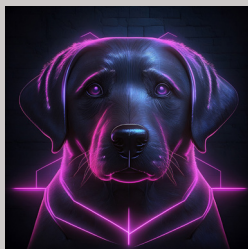
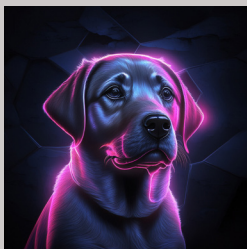
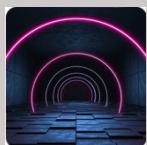
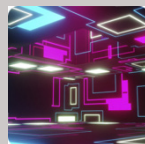
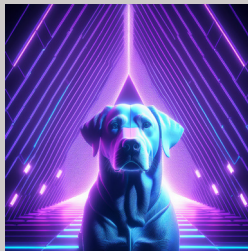
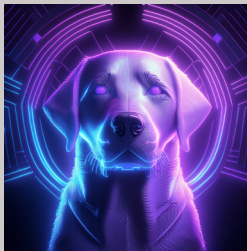
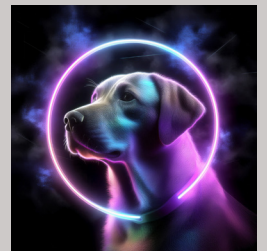
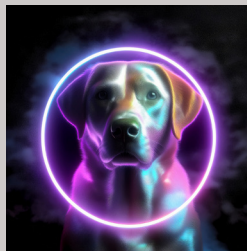
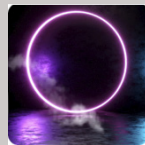


GRAPHIC



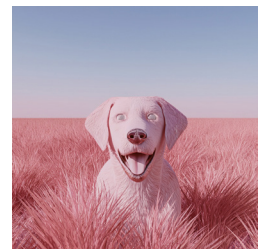
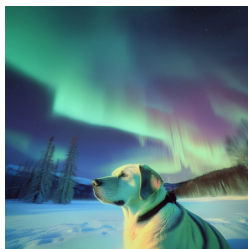
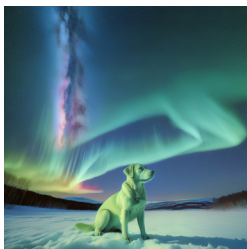
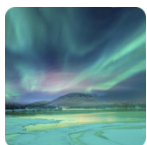
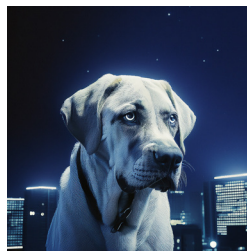
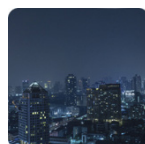
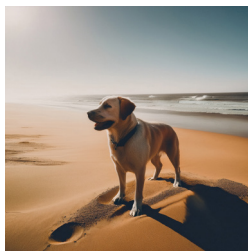
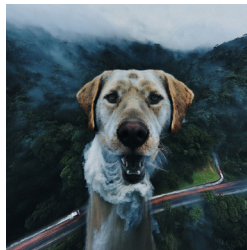
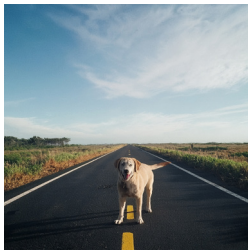


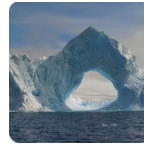
NEON





LANDSCAPES





DRAMATIC
LIGHTING

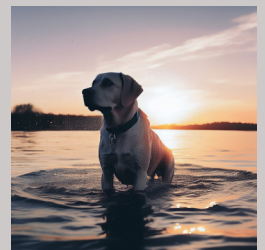
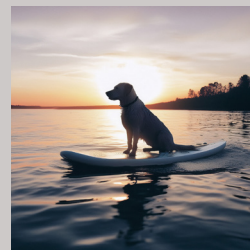
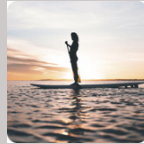
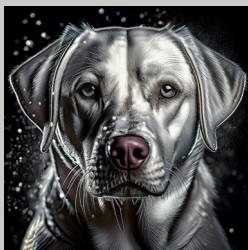
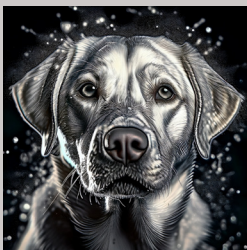
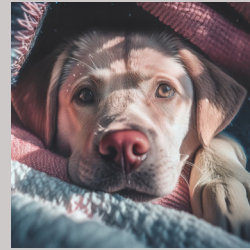
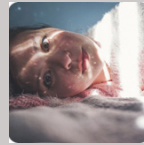
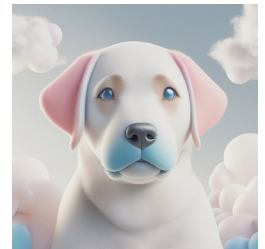
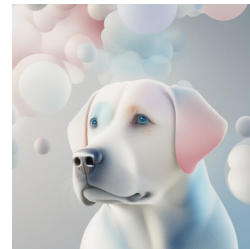
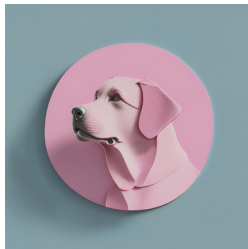
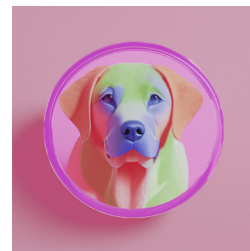
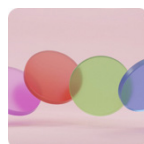
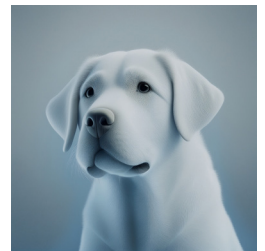
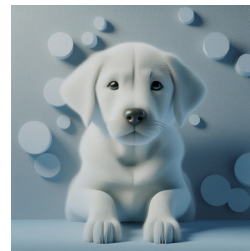


PHOTO STUDIO



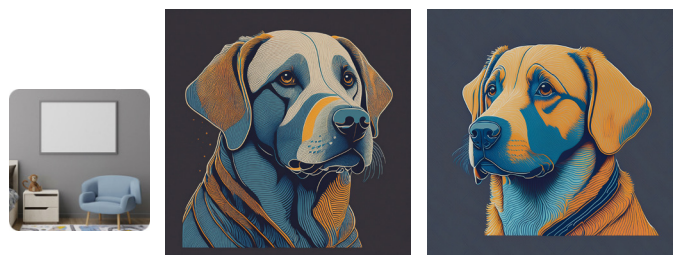
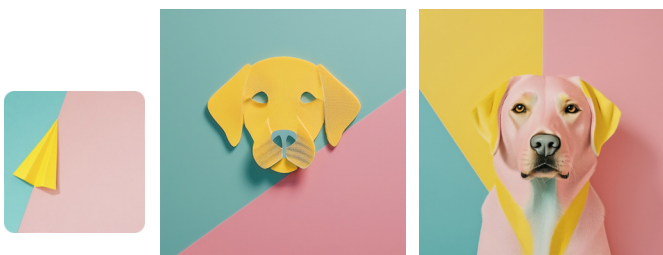
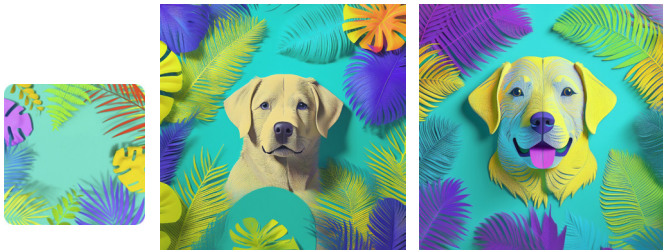
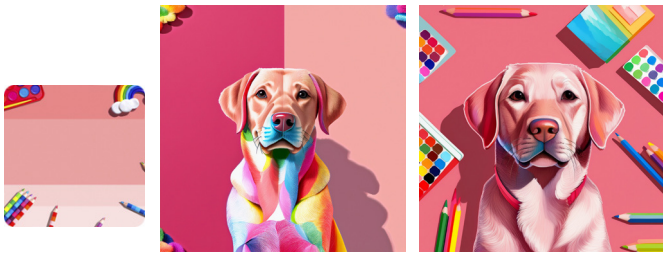
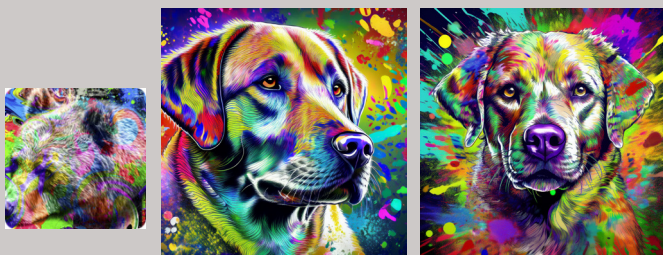
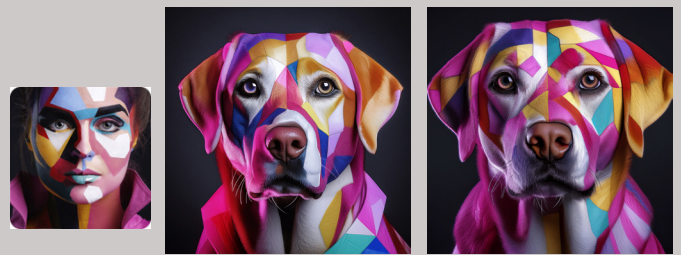
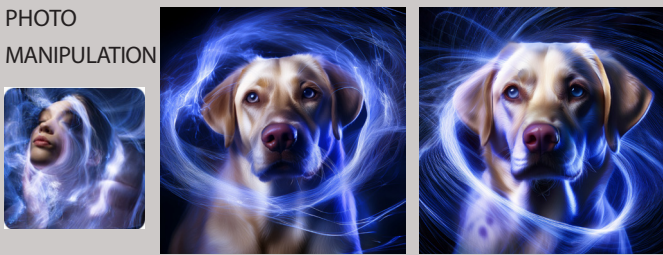
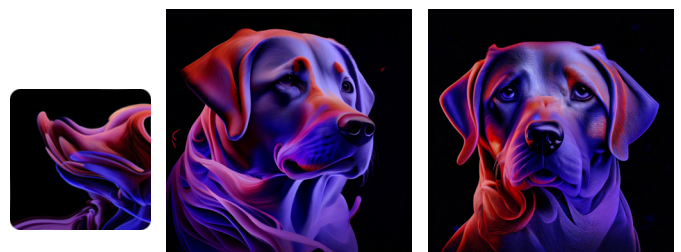
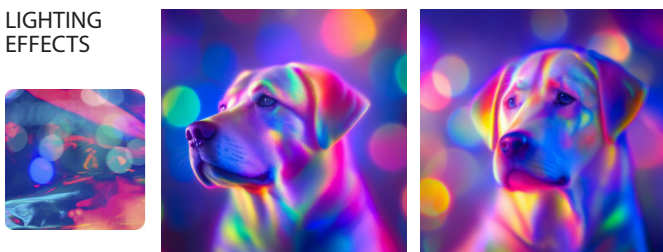


PHOTO
MANIPULATION

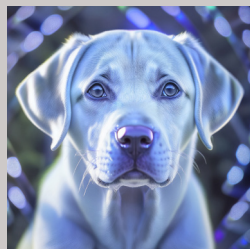
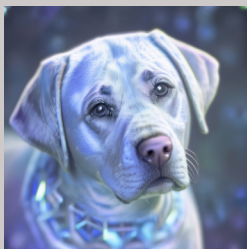
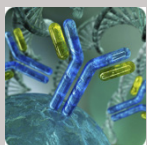
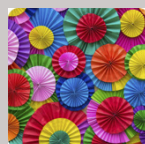
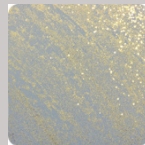
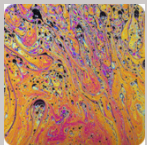
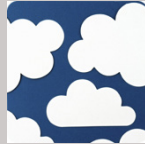
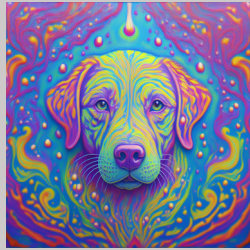
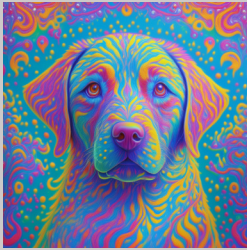
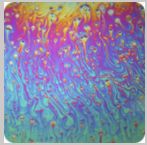


LIGHTING
EFFECTS

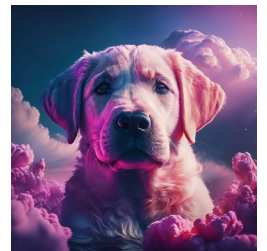
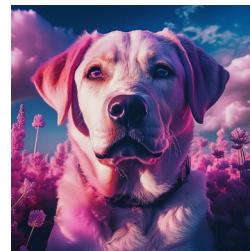
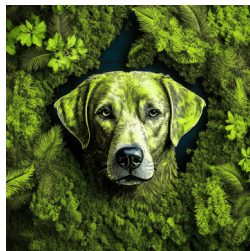
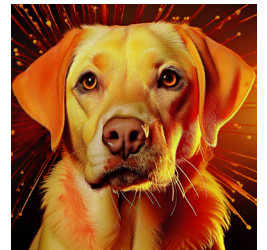
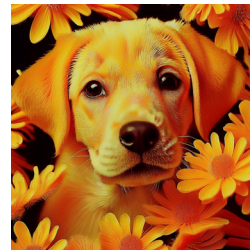
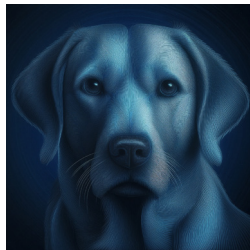
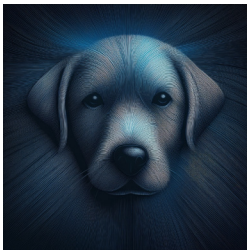
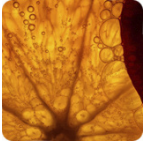
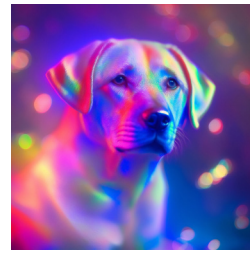




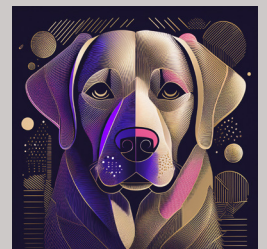
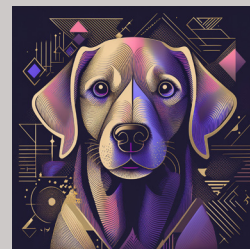
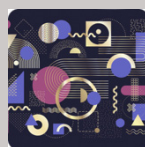
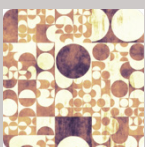
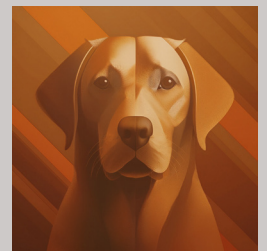
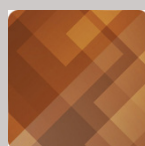
TEXTURE

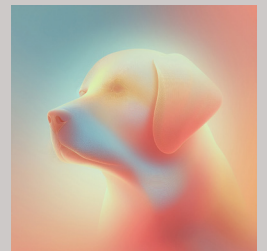
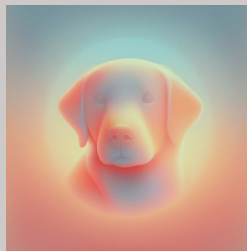
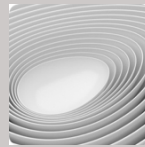
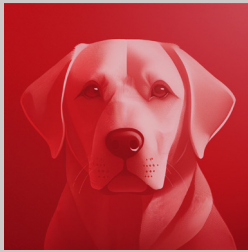


COLOR
& LIGHTING

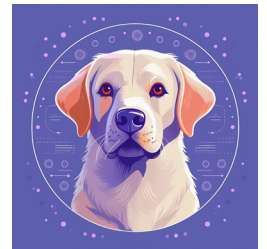
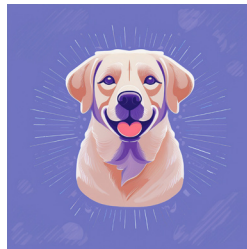
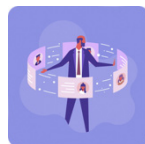


GEOMETRIC



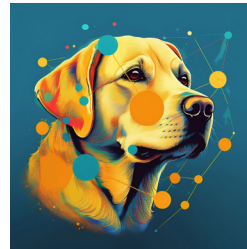
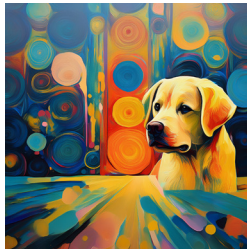
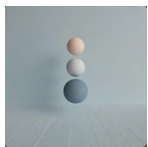
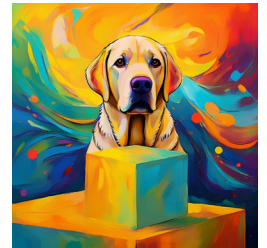
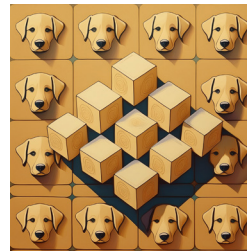
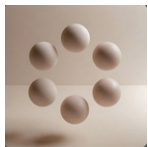


FLAT

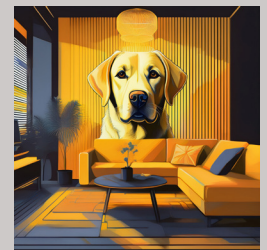
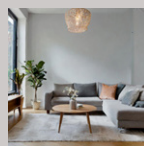
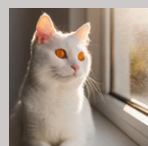
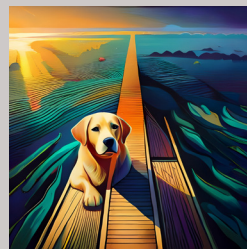
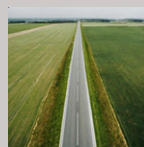
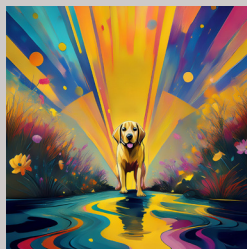
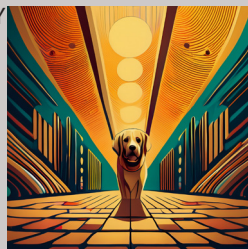
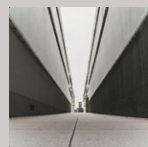


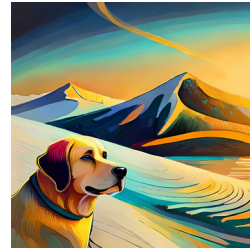
Using a Composition Reference image — Below are examples using the gallery of Composition References images that ship with Photoshop. The first image (which is smaller) is the Composition Reference image. The two larger examples to the right of the Composition Reference image are of the results of entering “Yellow Labrador” as the prompt, setting the Content Type to “Art” and selecting the Composition Reference image. Your results will differ as the Generate Image command in Photoshop never returns the exact same results twice. *Note: some images had the Composition Reference Strength slider set to 50%.*

ABSTRACT



PHOTOGRAPHY





LINE DRAWING

